

Prepare Him Room

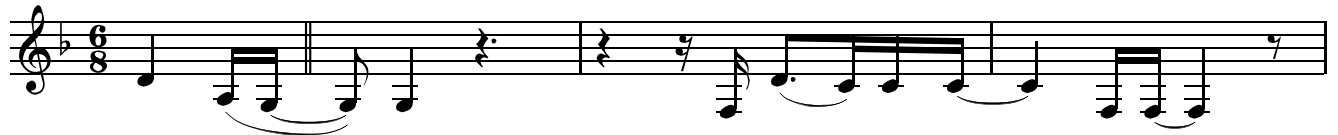
Words and Music by
Rita Baloche

$\text{♩} = 146$

F/A

B \flat^2

F/A



1. Who is _____ man

that You ___ would care ___ for us? _

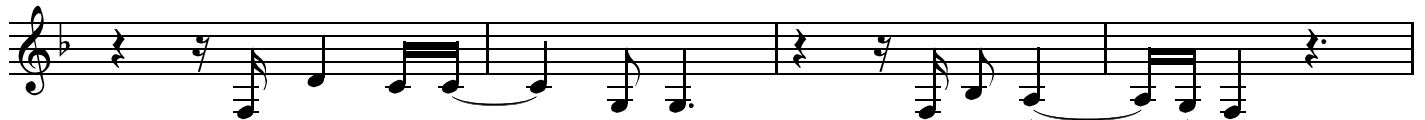
4

Dm 7

Gm 11

F/A

B \flat^2



You clothed Your-self _____ in flesh

to draw us _____ near;

8

F/A



In sin - ful _____ men

You've made _____ our hearts _____ Your home, _

12

Dm 7

Gm 11

F/A

Gm 11



to make Your glo - ry _____ known,

Your re-demp-tion _____ clear.

16

F/A

♯
B \flat^2

Dm 7

C

G $^{(4)}$



Let ev - 'ry heart

pre-pare Him room, _____

for noth - ing else

22

C sus

C

F/A

B \flat^2



com-pares with You; _____

Re-store the joy _____

of _____ our sal -

27 G^{11} $B\flat^2$ Gm^{11} F

-va-tion, Lord; Pre-pare our hearts for more of You.

2nd time to Coda \oplus
32 Dm^7 $B\flat^2$ Dm^7

—

39 Gm^{11} F/A $B\flat^2$ F/A

2. No great-er love has an-y-one than this,

44 Dm^7 Gm^{11} F/A $B\flat^2$

to sac-ri-fice the gift of Your on-ly Son; So we lay a-side.

49 F/A Dm^7

all the earth-ly things and all that comes.

53 Gm^{11} F/A Gm^{11} F/A D.S. al Coda

between this great di-vide. Let ev-'ry

\oplus Coda
57 $B\flat$ $C/B\flat$ $B\flat$ $C/B\flat$ F^5 $B\flat$ $C/B\flat$

—

62 $B\flat$ C/B \flat C F/A $B\flat^2$

Let ev - 'ry heart pre-prepare Him room.

67 Dm^7 C $G^{(4)}$ C^{sus} C F/A

for noth - ing else com-pares with You; Re-store the joy.

73 $B\flat^2$ G^{11} $B\flat^2$

of our sal - va - tion, Lord; Pre-prepare our hearts.

78 Gm^{11} F $B\flat$ C/B \flat $B\flat$ C/B \flat

for more of You.

83 F^5 $B\flat$ C/B \flat $B\flat$ C/B \flat

87 F^5